

MEETING:	Cabinet
DATE:	Wednesday, 18 May 2016
TIME:	10.00 am
VENUE:	Reception Room, Barnsley Town Hall

SUPPLEMENTARY AGENDA

Items for Decision/Recommendation to Council

Place Spokesperson

11. Local Plan Publication Version Consultation and Submission for Examination
(Cab.18.5.2016/11) (Pages 3 - 28)
RECOMMENDATION TO FULL COUNCIL ON 26TH MAY, 2016

To: Chair and Members of Cabinet:-

Councillors Houghton CBE (Chair), Andrews BEM, Bruff, Cheetham, Gardiner,
Howard, Miller and Platts

Cabinet Support Members:

Councillors Cherryholme, Dures, Franklin, Griffin and Mitchell

Chair of Overview and Scrutiny Committee
Chair of Safeguarding Scrutiny Committee
Chair of Audit Committee

Diana Terris, Chief Executive
Rachel Dickinson, Executive Director People
Matt Gladstone, Executive Director Place
Wendy Lowder, Interim Executive Director Communities
Julia Burrows, Director Public Health
Frances Foster, Director Finance, Assets and Information Services
Julia Bell, Director Human Resources, Performance and Communications
Andrew Frosdick, Director Legal and Governance
Anna Morley, Scrutiny Officer
Katie Rogers, Communications and Marketing Business Partner
Ian Turner, Service Director, Council Governance

Corporate Communications and Marketing
Labour Group Room – 1 copy

Please contact Ian Turner on 01226 773421 or email governance@barnsley.gov.uk

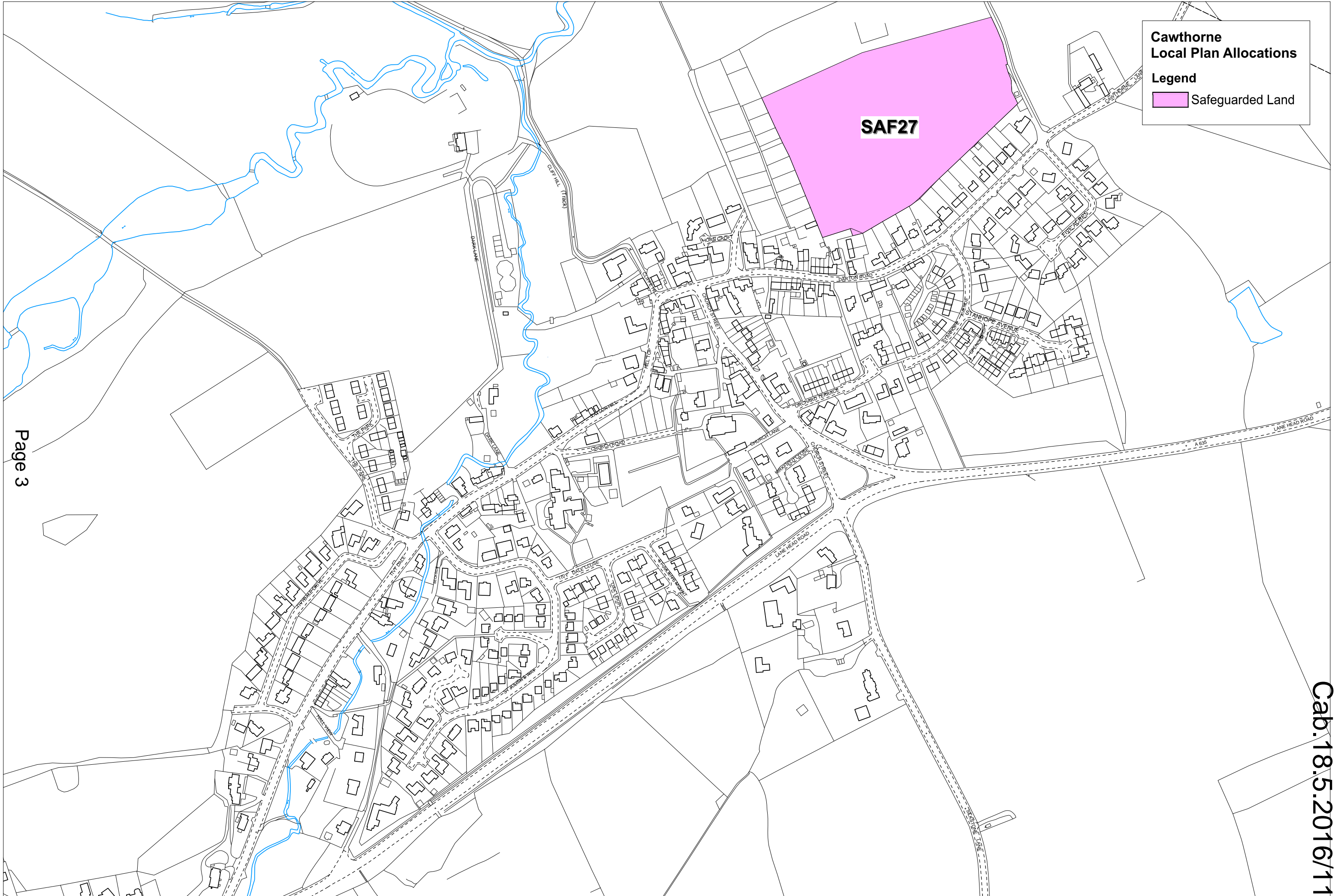
11th May, 2016

This page is intentionally left blank

**Cawthorne
Local Plan Allocations**

Legend

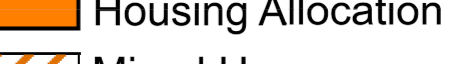
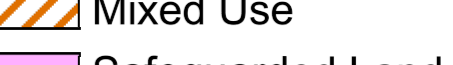
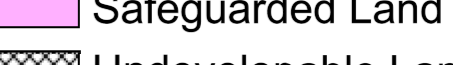

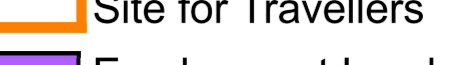


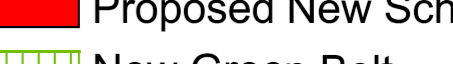

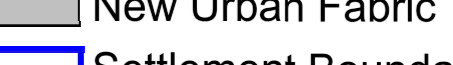

- Safeguarded Land

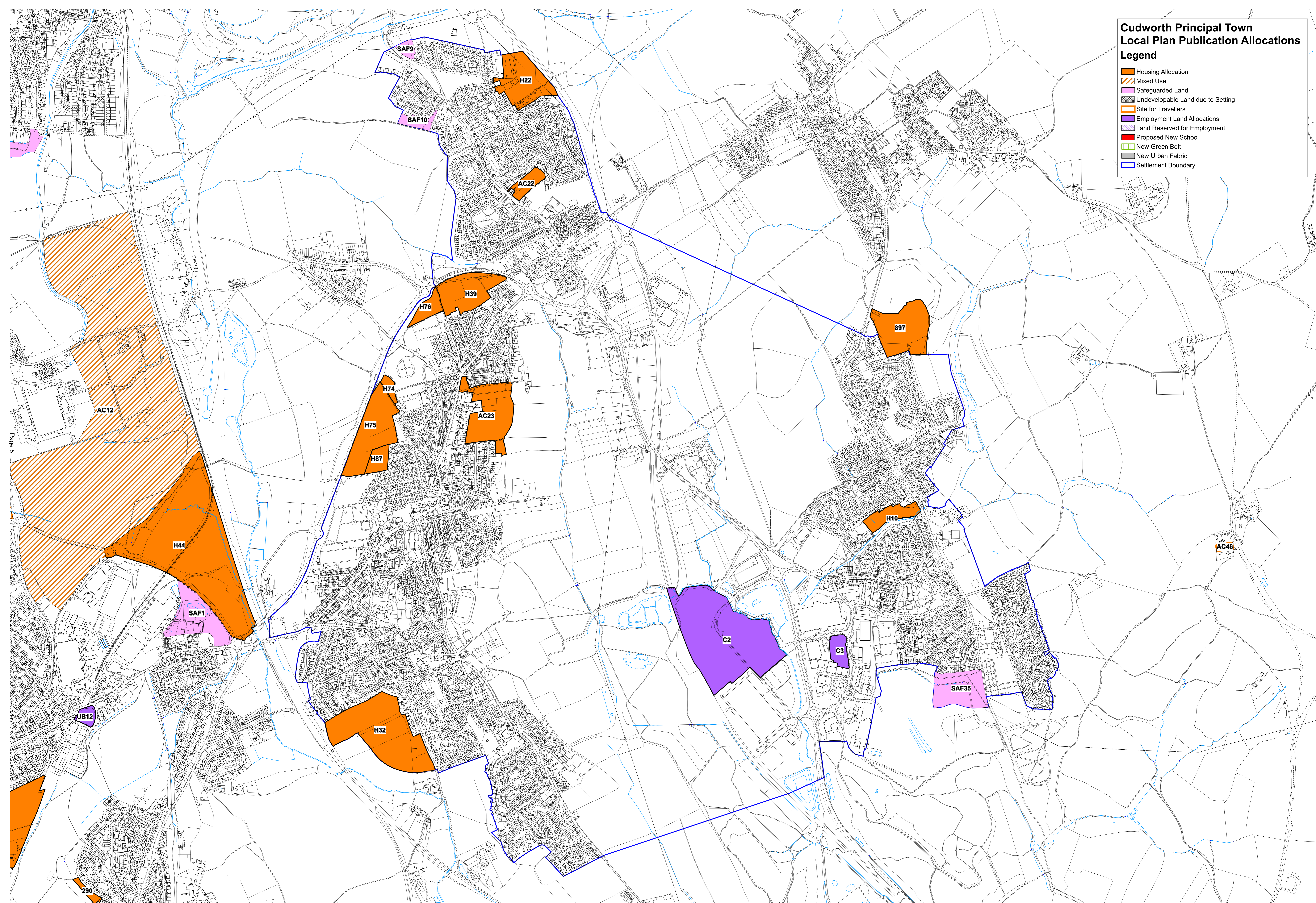


This page is intentionally left blank

Cudworth Principal Town Local Plan Publication Allocations

Legend

-  Housing Allocation
-  Mixed Use
-  Safeguarded Land
-  Undevelopable Land due to Setting
-  Site for Travellers
-  Employment Land Allocations
-  Land Reserved for Employment
-  Proposed New School
-  New Green Belt
-  New Urban Fabric
-  Settlement Boundary

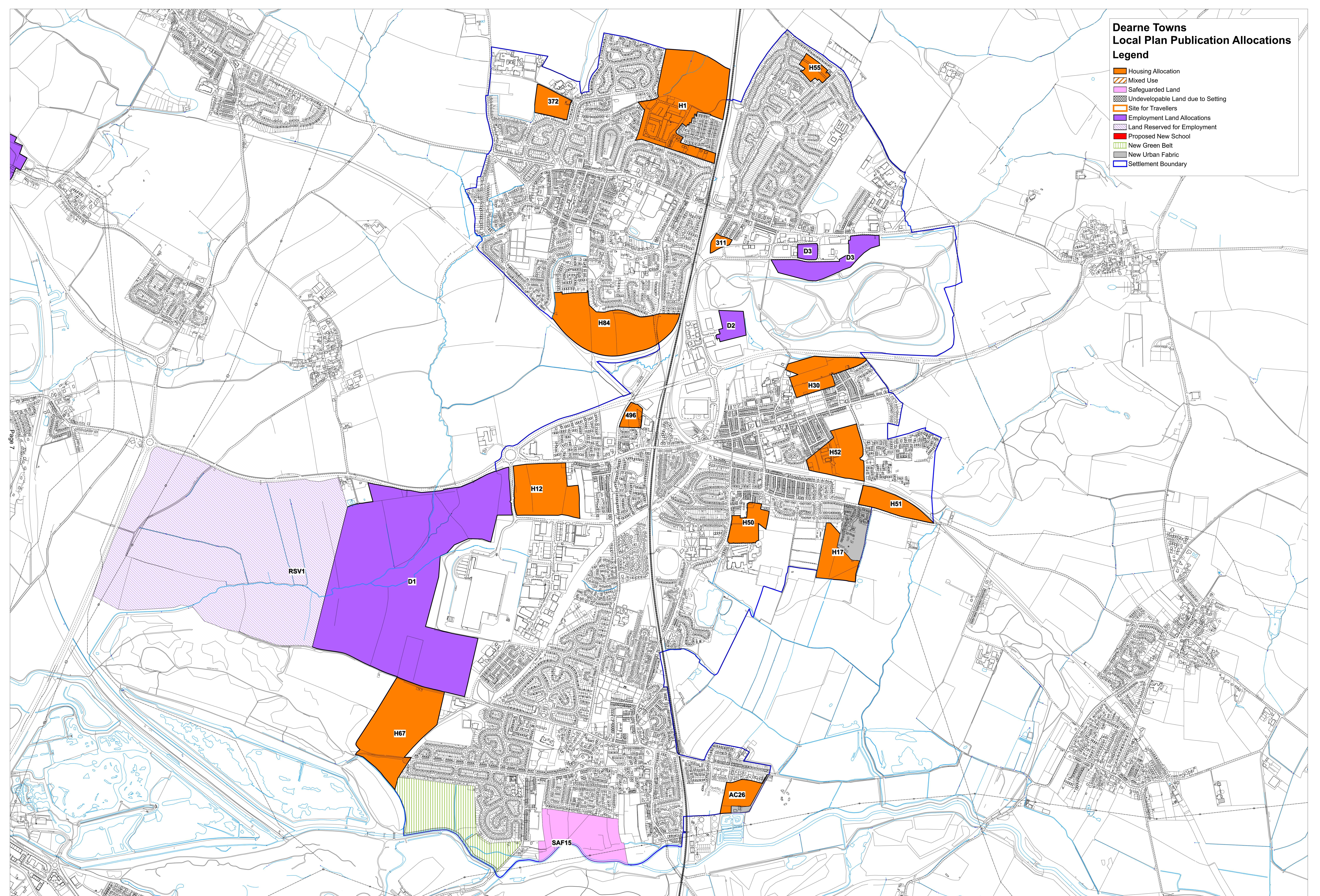


Page 5

This page is intentionally left blank

**Dearne Towns
Local Plan Publication Allocations
Legend**

- Housing Allocation
- Mixed Use
- Safeguarded Land
- Undevelopable Land due to Setting
- Site for Travellers
- Employment Land Allocations
- Land Reserved for Employment
- Proposed New School
- New Green Belt
- New Urban Fabric
- Settlement Boundary




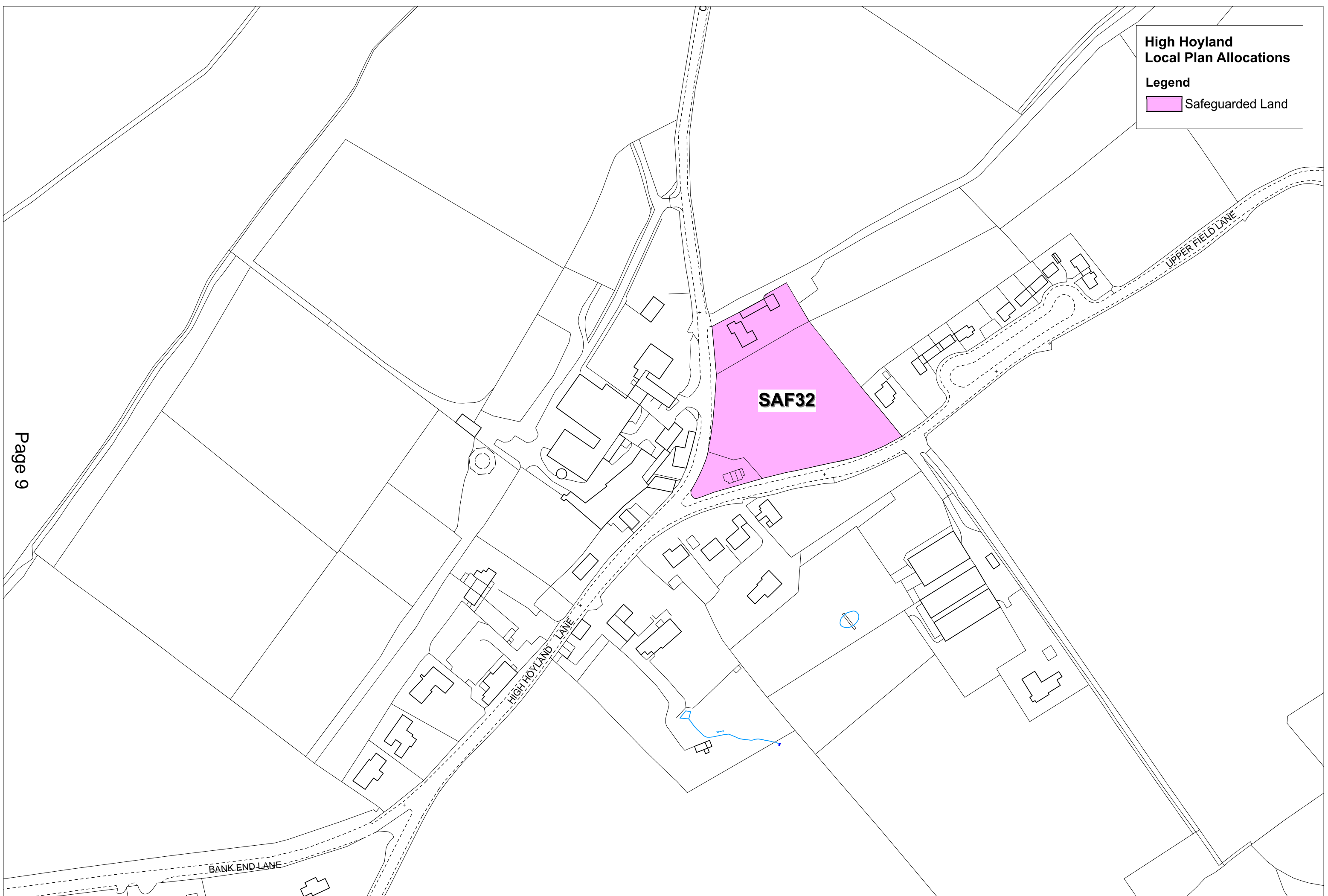
Page 7

This page is intentionally left blank

**High Hoyland
Local Plan Allocations**

Legend

 Safeguarded Land

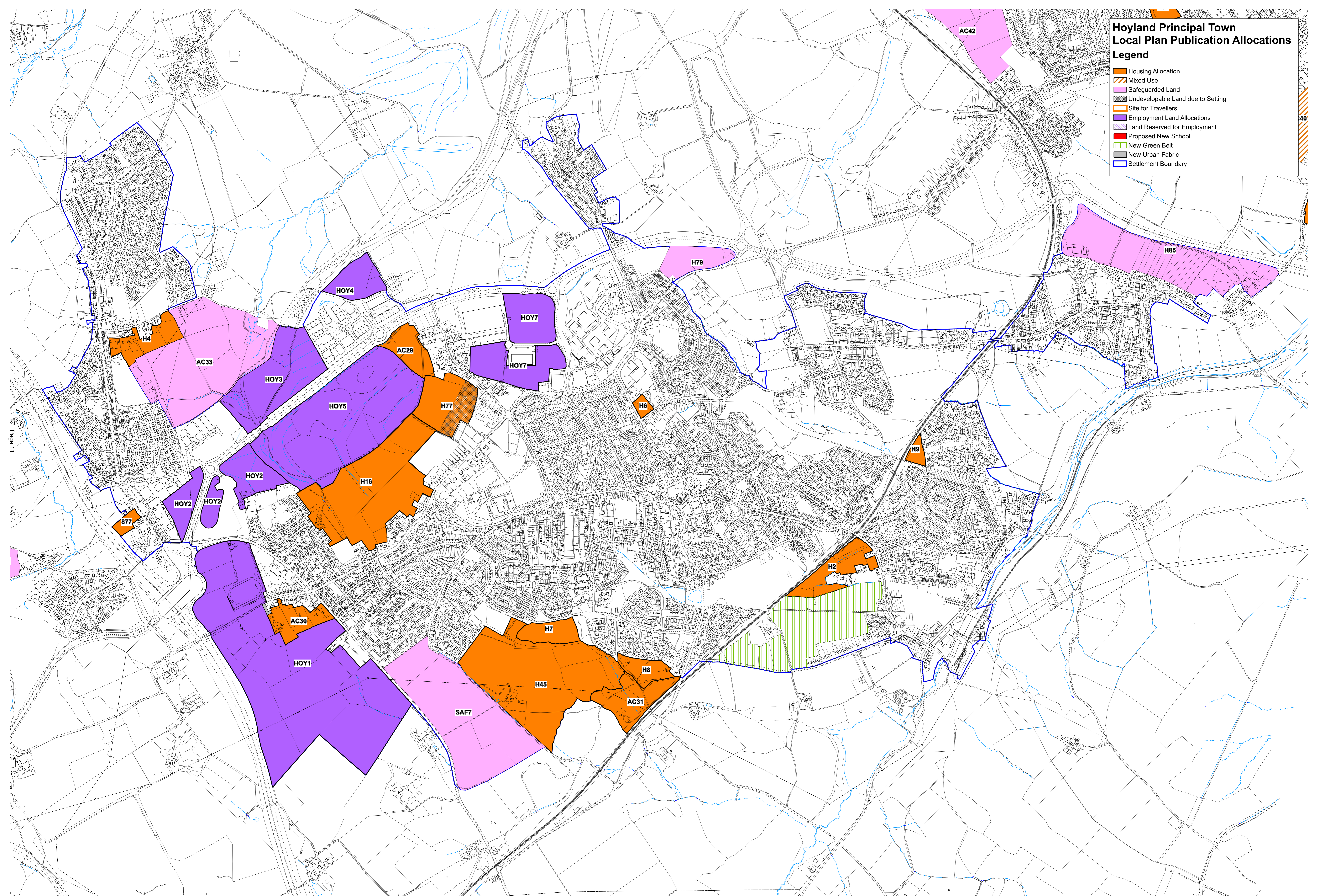


This page is intentionally left blank

Hoyland Principal Town Local Plan Publication Allocations

Legend

- Housing Allocation
- Mixed Use
- Safeguarded Land
- Undevelopable Land due to Setting
- Site for Travellers
- Employment Land Allocations
- Land Reserved for Employment
- Proposed New School
- New Green Belt
- New Urban Fabric
- Settlement Boundary



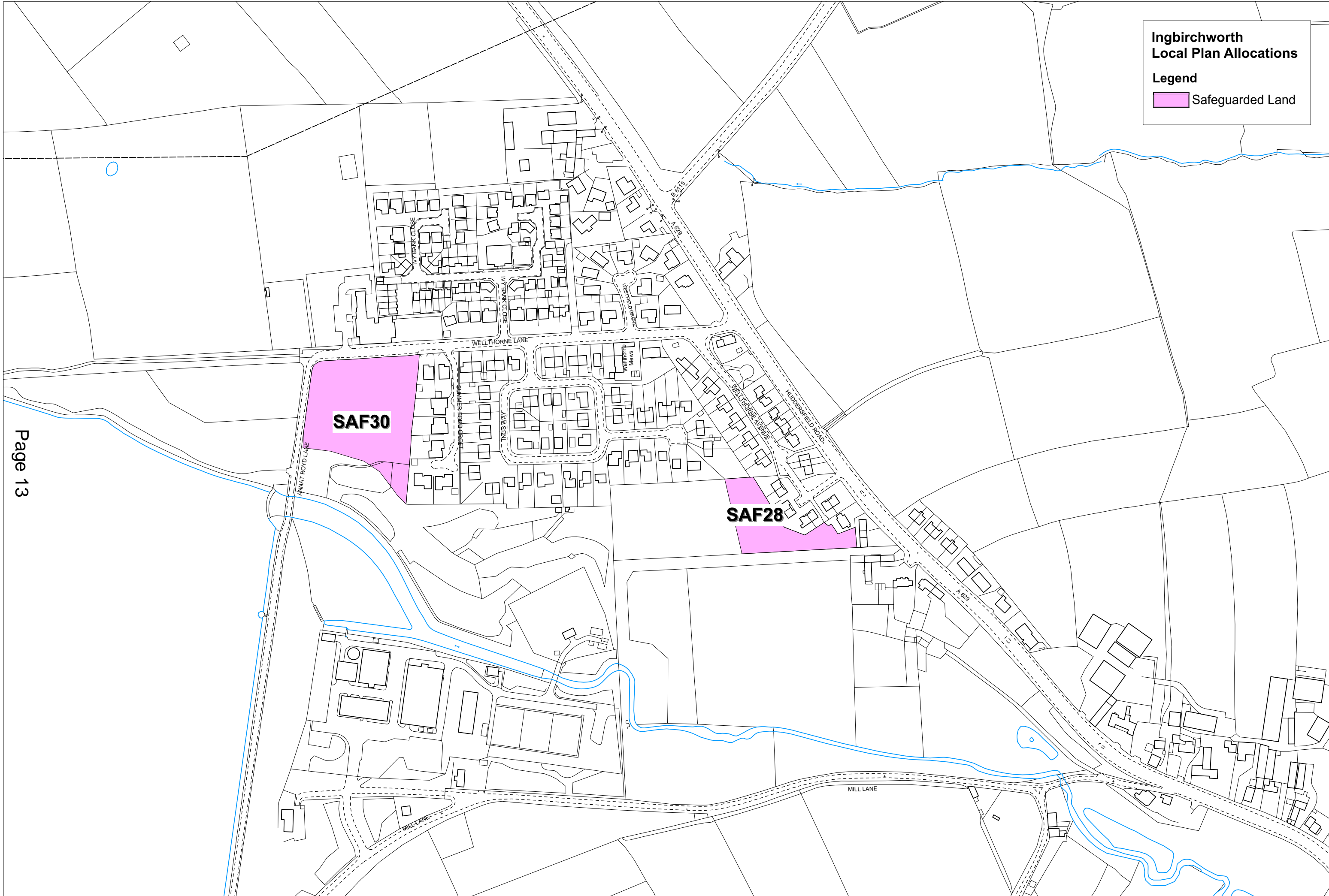
Page 11

This page is intentionally left blank

**Ingbirchworth
Local Plan Allocations**

Legend

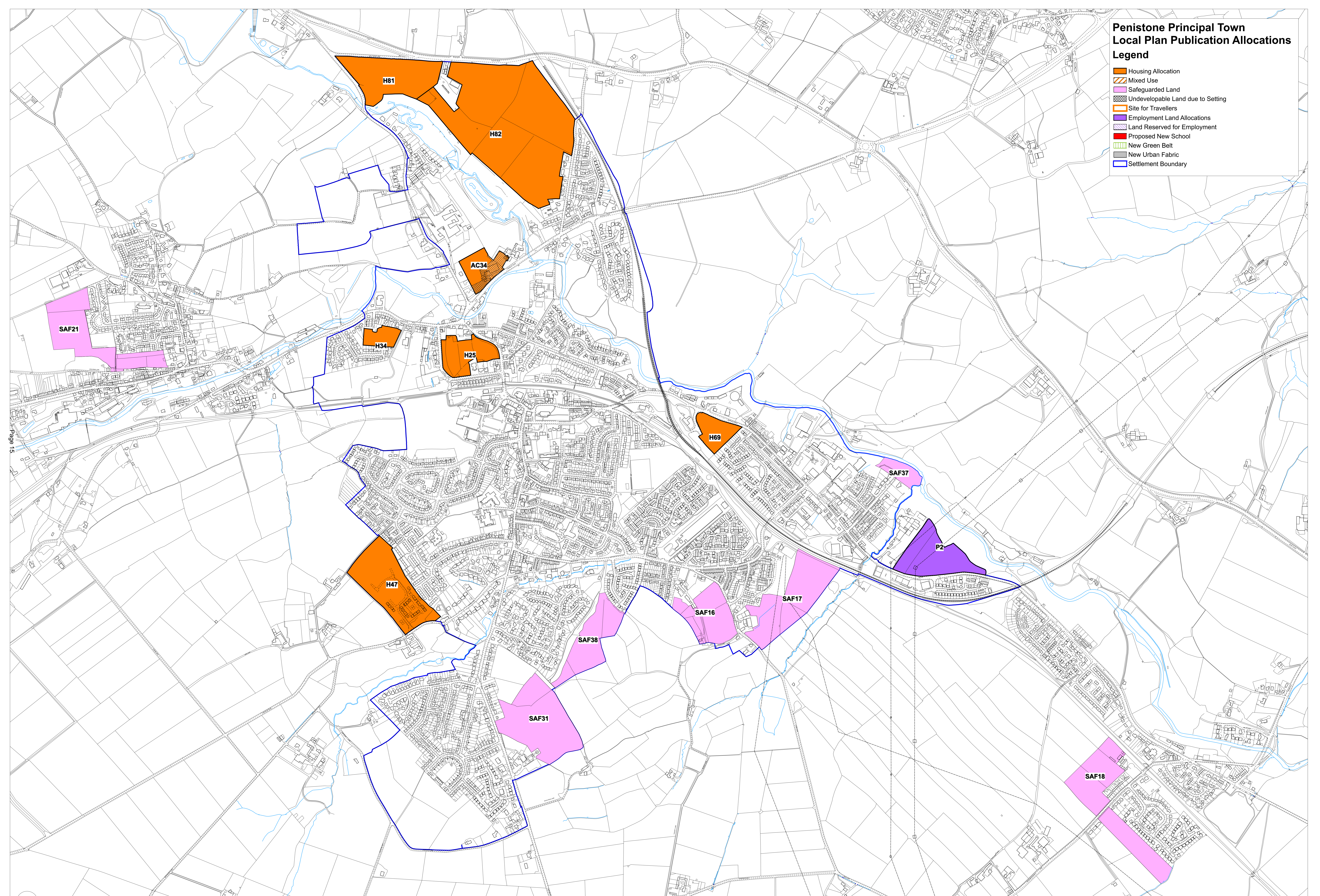
Safeguarded Land



This page is intentionally left blank

**Penistone Principal Town
Local Plan Publication Allocations
Legend**

- Housing Allocation
- Mixed Use
- Safeguarded Land
- Undevelopable Land due to Setting
- Site for Travellers
- Employment Land Allocations
- Land Reserved for Employment
- Proposed New School
- New Green Belt
- New Urban Fabric
- Settlement Boundary

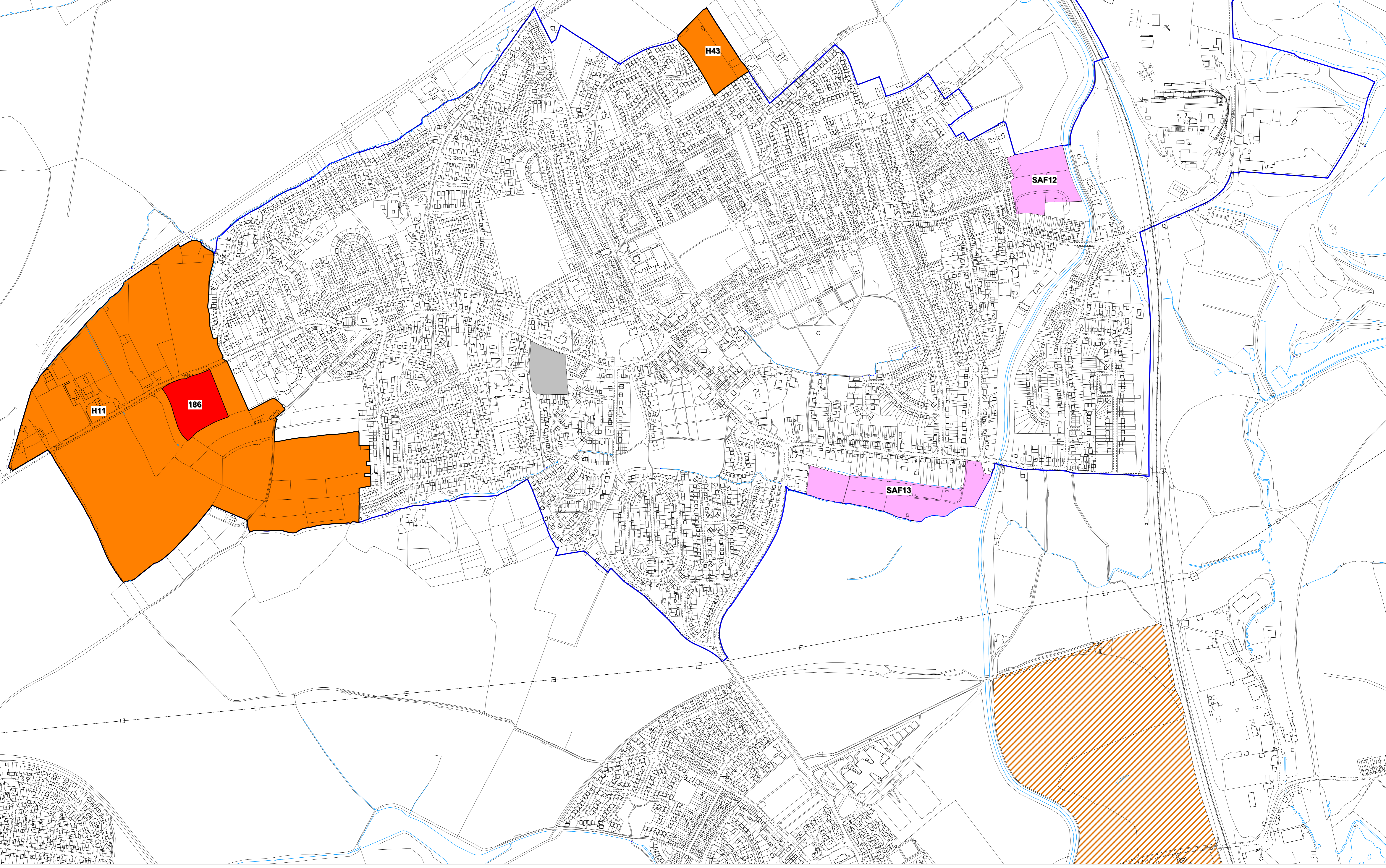


Page 15

This page is intentionally left blank

**Royston Principal Town
Local Plan Publication Allocations
Legend**

- Housing Allocation
- Mixed Use
- Safeguarded Land
- Undevelopable Land due to Setting
- Site for Travellers
- Employment Land Allocations
- Land Reserved for Employment
- Proposed New School
- New Green Belt
- New Urban Fabric
- Settlement Boundary

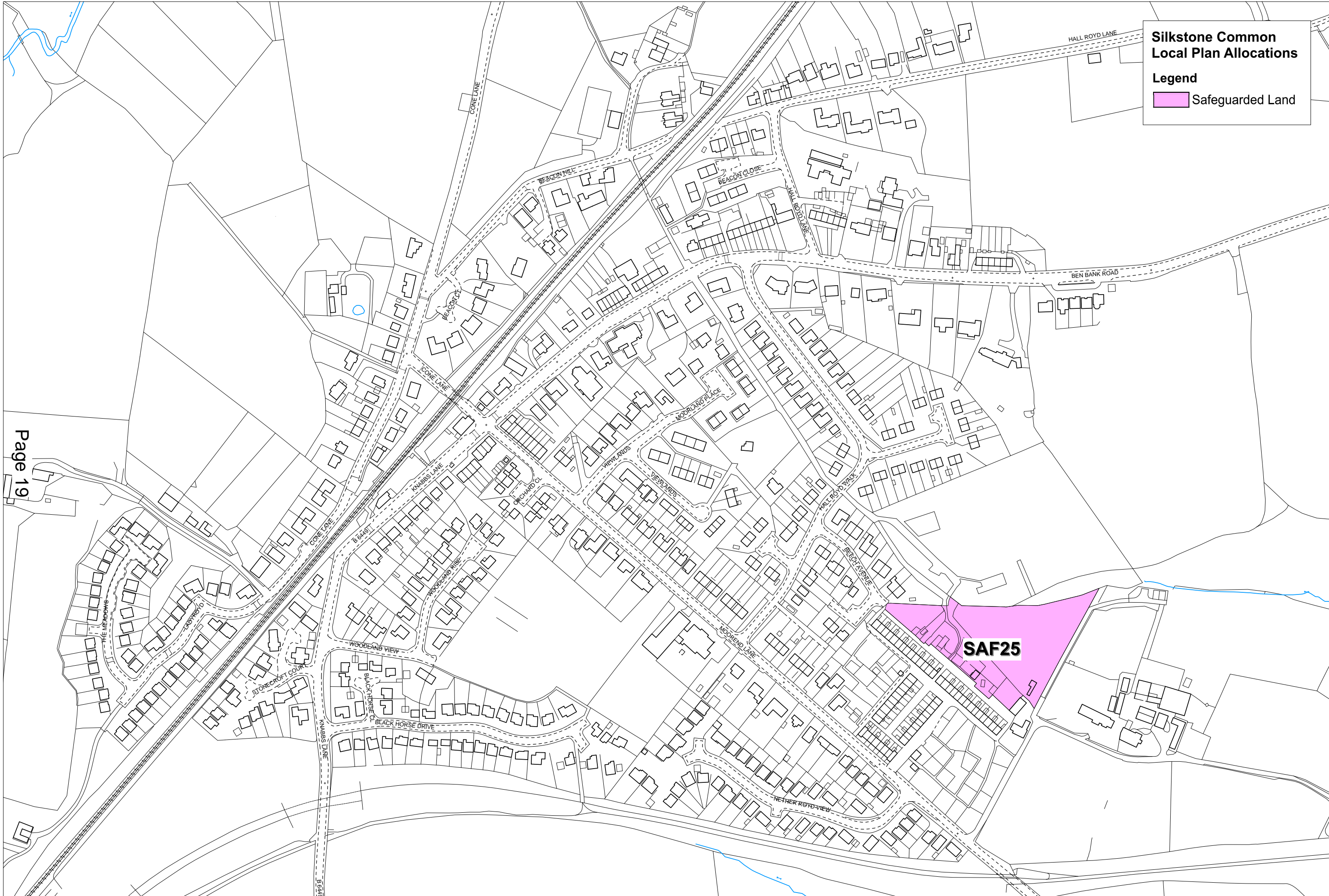


This page is intentionally left blank

**Silkstone Common
Local Plan Allocations**

Legend

Safeguarded Land

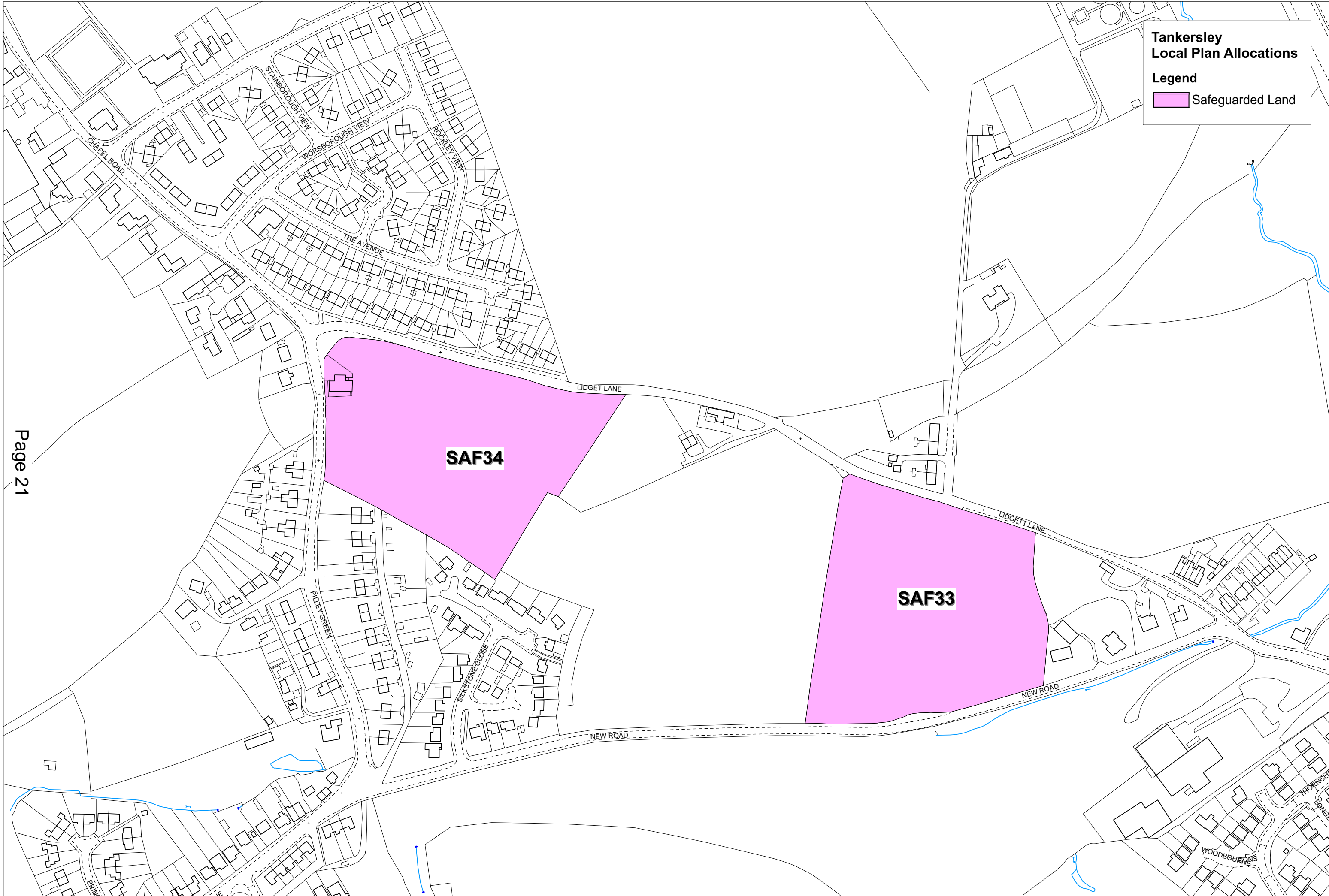


This page is intentionally left blank

**Tankersley
Local Plan Allocations**

Legend


- Safeguarded Land

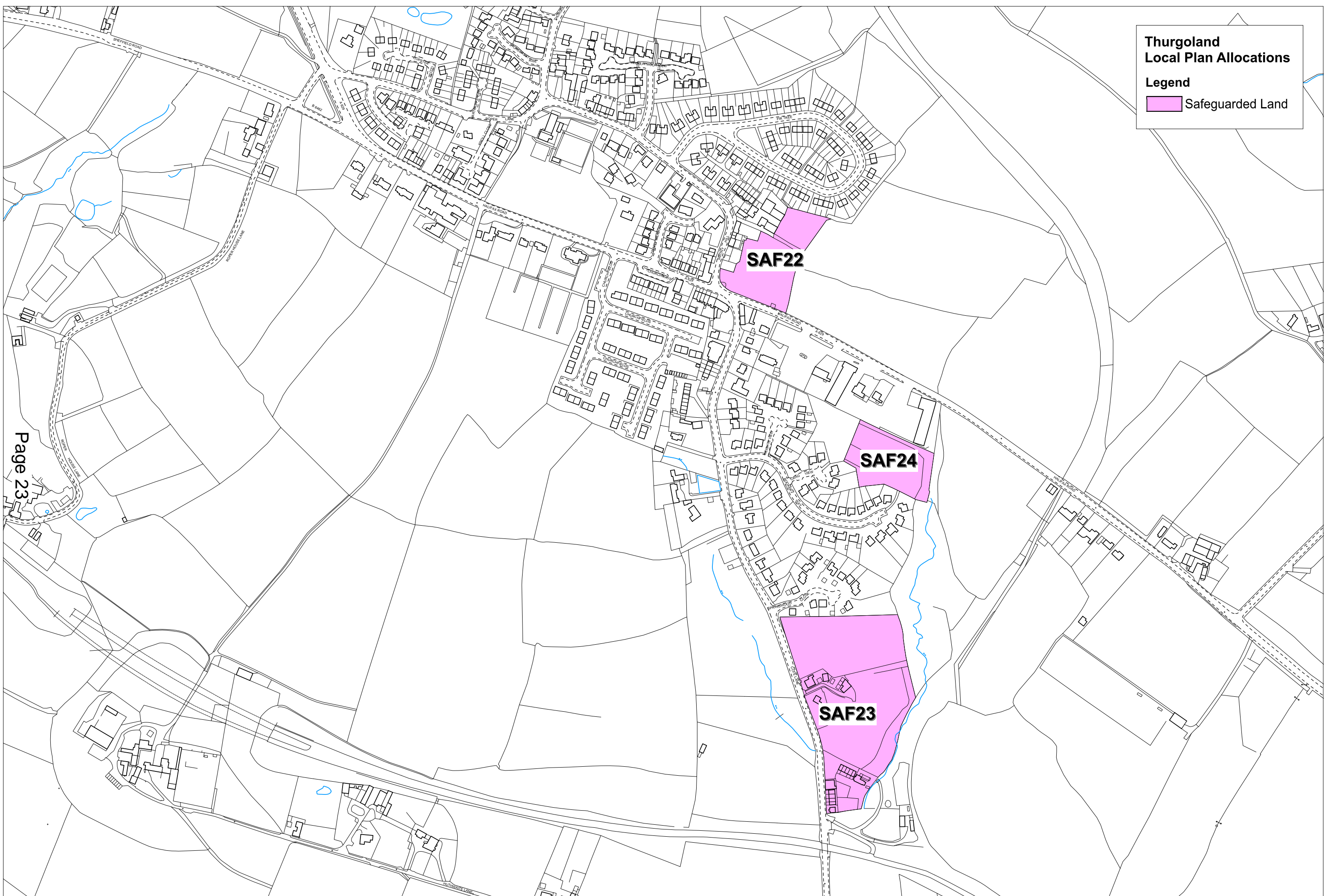


This page is intentionally left blank

**Thurgoland
Local Plan Allocations**

Legend

 Safeguarded Land



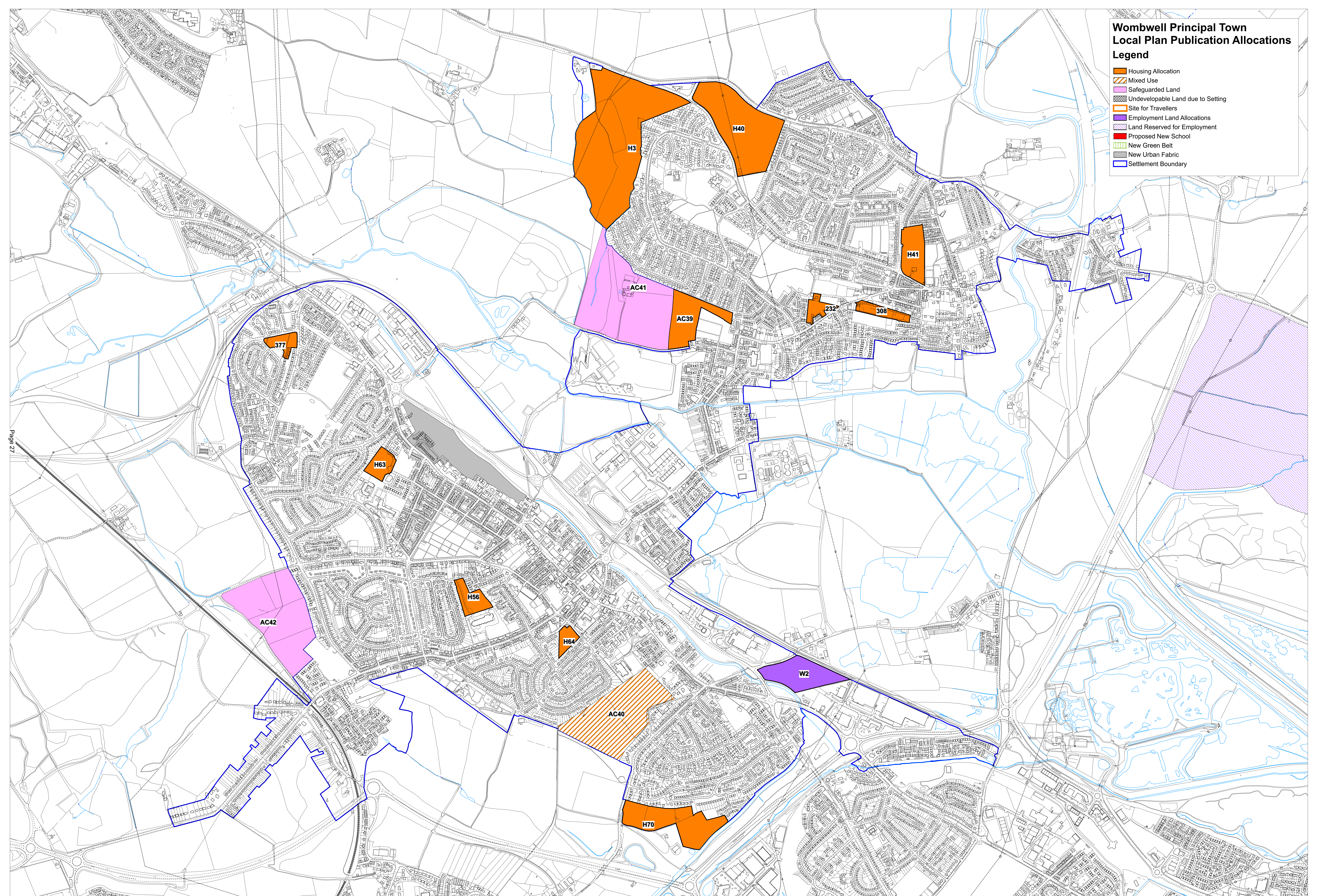
This page is intentionally left blank

This page is intentionally left blank

Wombwell Principal Town Local Plan Publication Allocations

Legend

- Housing Allocation
- Mixed Use
- Safeguarded Land
- Undevelopable Land due to Setting
- Site for Travellers
- Employment Land Allocations
- Land Reserved for Employment
- Proposed New School
- New Green Belt
- New Urban Fabric
- Settlement Boundary



This page is intentionally left blank